



**Application:** e.g.

Container discharge, especially for bulky material on transport trucks. Easy mounting on molds for concrete compaction or on machine parts to vibrate bulk material, on hoppers or silos.

**Technical data:**

The NHG 500, NHG 900 and NHG 3000 have fixed eccentric weights.

Adjustable unbalance and stronger vibrator types on request.

The NHG 600 R has adjustable weights, which can be set from outside stepwise.

Type	Weight [kg]	Unbalance [cmkg]	Long term operation AT/h > 60%			Short term operation AT/h < 60%		
			Frequency [rpm]	Centrifugal force [N]	Flow [l/min]	Frequency [rpm]	Centrifugal force [N]	Flow [l/min]
<b>NHG 500 (L)</b>	6,4	2,06	6.000	4.070	12	7.000	5.550	14
<b>NHG 600 R (L)</b>	8,2	3,00	6.000	5.922	12	7.000	5.723*	14
<b>NHG 900 (L)</b>	7,7	6,64	4.000	5.870	8	5.000	9.100	10
<b>NHG 3000 (L)</b>	29,0	29,18	3.500	19.600	20	4.000	25.600	22

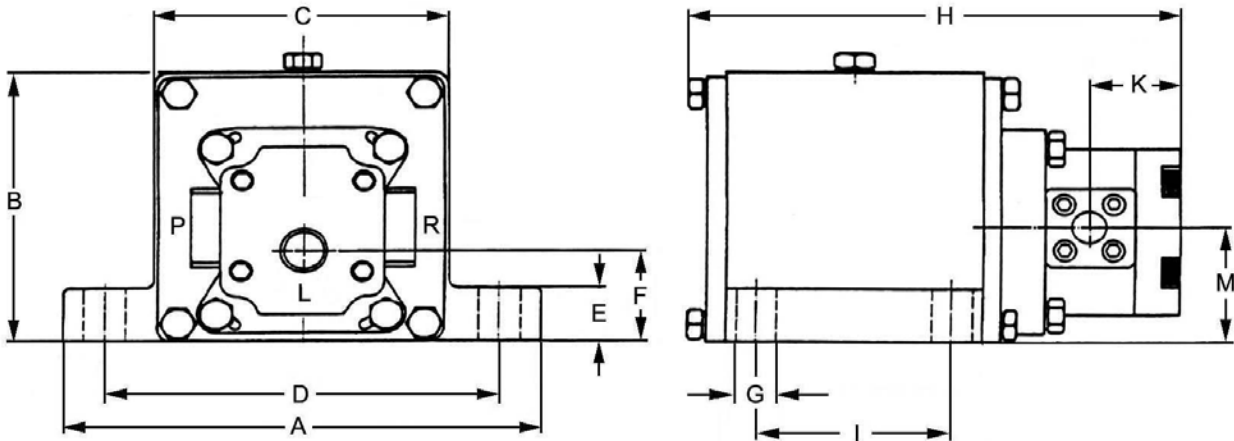
\*) In this case the unbalance must be reduced to 2,19 cmkg.

**Hint:**

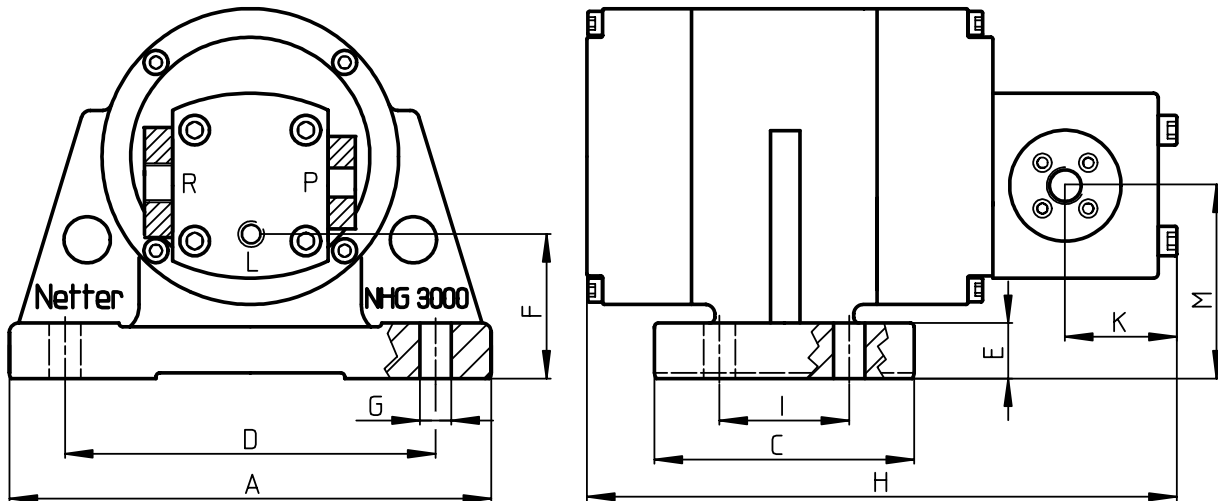
We recommend the use of an oil control valve to limit the oil flow according to the maximal given in the chart.

Our experienced technicians will advise you further.

## Dimensions NHG 500, NHG 600 R and NHG 900



## Dimensions NHG 3000



Type	A [mm]	B [mm]	C [mm]	D [mm]	E [mm]	F [mm]	Ø G [mm]	H [mm]	I [mm]	K [mm]	Ø L [mm]	M [mm]	Ø P [mm]	Ø R [mm]
NHG 500 NHG 600R NHG 900	194	120	120	160	24	36	17	212	80	37	G1/4	47	G1/4	G3/8
NHG 3000	260	190 (210)	140	200	30	60 (80)	17	320	70	50	G1/8	94 (114)	G3/8	G1/2

## Connecting data:

Type	Operating pressure inlet [bar]	Operating pressure outlet [bar]	Oil temperature max. [°C]	Ambient temperature [°C]	Connecting thread inlet	Connecting thread outlet
NHG					Pressure side	Return side
500	200	0,5*	90	-20 to 80	G 1/4	G 3/8
600 R	200	0,5*	90	-20 to 80	G 1/4	G 3/8
900	200	0,5*	90	-20 to 80	G 1/4	G 3/8
3000	300	-0,4 to 2,0	90	-20 to 60	G 3/8	G 1/2

\*) if back pressure > 0,5 bar then leakage line will be necessary to protect the shaft sealing.