



9

Netter Stainless Steel Electric External Vibrators Series NES



- Circular vibration
- Especially resistant to aggressive environmental conditions
- Centrifugal force from 296 N to 42.446 N
- High operational safety
- Tropical insulation by vacuum impregnation
- Protection IP 66
- Nominal frequency from 750 min⁻¹ to 3.600 min⁻¹
- Stainless steel housing
- Ex II 2 D (ATEX) versions available

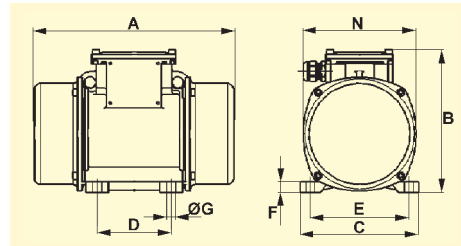




NetterVibration



Netter Stainless Steel Electric External Vibrators Series NES



[min ⁻¹]	Type	Working Moment [cmkg]		Centrifugal Force [N]		Power [kW]		Current [A]		Weight [kg]		Dimensions [mm]								
		50 Hz	60 Hz	50 Hz	60 Hz	50 Hz	60 Hz	50 Hz 400 V	60 Hz 480 V	50 Hz	60 Hz	50/60 Hz		A	B	C	D	E	F	G
3000 3600	NES 50120	2,40	2,40	1.185	1.706	0,180	0,180	0,35	0,30	7,80	7,80	209	151	125	62-74	106	10	9		
	NES 50210	4,20	3,00	2.073	2.133	0,180	0,180	0,35	0,30	8,20	8,00	225	151	125	62-74	106	10	9		
	NES 50300	6,02	4,08	2.972	2.900	0,260	0,270	0,60	0,50	12,50	12,00	255	176	152	90	125	12	13		
	NES 50500	9,97	6,48	4.921	4.606	0,450	0,500	0,80	0,75	18,50	17,50	284	200	167	105	140	15	13		
	NES 50790	15,59	10,40	7.695	7.392	0,650	0,685	1,10	1,00	25,00	24,00	308	205	205	120	170	17	17		
	NES 501090	22,00	14,60	10.858	10.377	1,000	1,200	1,75	1,75	30,00	29,00	354	232	205	120	170	20	17		
	NES 501510	30,60	20,40	15.103	14.499	1,400	1,450	2,30	2,00	39,60	38,00	438	245	230	140	190	25	17		
	NES 502020	41,00	25,60	20.236	18.195	2,200	2,200	3,50	3,00	48,70	46,30	438	245	230	140	190	25	17		
1500 1800	NES 2530	2,40	2,40	296	426	0,085	0,095	0,21	0,20	7,80	7,80	209	151	125	62-74	106	10	9		
	NES 2580	6,20	4,20	766	747	0,085	0,095	0,21	0,20	9,00	8,70	225	151	125	62-74	106	10	9		
	NES 25100	7,78	6,20	960	1.102	0,085	0,095	0,21	0,20	9,40	9,00	241/225	151	125	62-74	106	10	9		
	NES 25210	16,84	11,76	2.078	2.090	0,170	0,170	0,41	0,40	15,80	15,00	295	176	152	90	125	12	13		
	NES 25410	32,64	22,66	4.028	4.027	0,300	0,350	0,60	0,60	22,50	21,70	340	200	167	105	140	15	13		
	NES 25550	43,80	32,64	5.405	5.800	0,300	0,350	0,60	0,60	23,90	22,50	380	200	167	105	140	15	13		
	NES 25720	57,18	41,89	7.056	7.444	0,525	0,665	0,92	0,98	32,00	30,70	378	211	205	120	170	17	17		
	NES 251030	83,00	54,20	10.241	9.630	0,550	0,680	0,95	0,95	42,00	37,50	434	232	205	120	170	20	17		
	NES 251390	112,20	80,00	13.844	14.215	0,900	1,050	1,45	1,50	53,00	50,00	442	245	230	140	190	25	17		
	NES 251760	143,00	97,00	17.645	17.235	1,100	1,200	2,00	1,90	58,50	54,50	490	245	230	140	190	25	17		
	NES 252020	163,40	112,20	20.162	19.936	1,350	1,450	2,50	2,30	70,00	68,00	560	245	230	140	190	25	17		
	NES 252380	192,40	134,80	23.740	23.951	1,600	1,700	3,20	3,00	82,00	76,00	525	285	275	155	225	30	22		
	NES 253050	247,00	171,60	30.477	30.490	1,900	2,000	3,80	3,50	92,00	89,00	601	285	275	155	255	30	22		
	NES 253770	305,20	206,80	37.659	36.745	2,200	2,500	3,90	3,90	115,00	110,00	589	323	310	155	255	35	23,5		
NES 244250	344,00	234,60	42.446	41.684	2,500	2,800	4,80	4,65	122,00	117,00	589	323	310	155	255	35	23,5			
1000 1200	NES 1630	6,02	6,02	331	476	0,120	0,135	0,30	0,30	12,50	12,50	255	176	152	90	125	12	13		
	NES 16100	16,84	16,84	924	1.330	0,120	0,135	0,30	0,30	15,80	15,80	295	176	152	90	125	12	13		
	NES 16190	32,64	32,64	1.790	2.578	0,185	0,205	0,50	0,50	22,50	22,50	340	200	167	105	140	15	13		
	NES 16320	57,18	41,89	3.136	3.309	0,350	0,380	0,72	0,68	32,00	30,70	378	211	205	120	170	17	17		
	NES 16500	91,40	91,40	5.012	7.218	0,350	0,380	0,75	0,68	43,50	43,50	434	232	205	120	170	20	17		
	NES 16800	144,60	112,20	7.930	8.860	0,680	0,760	1,40	1,35	54,00	52,60	490/442	245	230	140	190	25	17		
	NES 161110	202,40	143,00	11.100	11.293	0,750	0,750	1,65	1,50	67,00	59,50	560/490	245	230	140	190	25	17		
	NES 161400	254,80	180,80	13.973	14.278	0,950	1,000	2,10	2,00	78,00	71,00	560	245	230	140	190	25	17		
	NES 161610	292,80	192,40	16.057	15.194	1,100	1,300	2,20	2,20	94,00	83,00	601/525	285	275	155	225	30	22		
	NES 162120	385,40	263,60	21.135	20.816	1,500	1,700	3,00	2,90	105,00	93,00	601	285	275	155	225	30	22		
750 900	NES 162550	465,20	341,20	25.512	26.944	1,960	2,100	4,10	3,75	130,00	116,00	657/589	323	310	155	255	35	23,5		
	NES 162950	538,00	388,00	29.504	30.640	2,200	2,400	4,50	4,30	145,00	130,00	705	323	310	155	255	35	23,5		
	NES 12100	32,64	32,64	1.007	1.450	0,230	0,250	0,85	0,76	22,50	22,50	340	200	167	105	140	15	13		
	NES 12180	56,80	56,80	1.752	2.523	0,350	0,380	1,10	1,05	32,00	32,00	378	211	205	120	170	17	17		

Applications

The stainless steel electric vibrators of the NES series are used mainly in the chemical, pharmaceutical and food industries. They serve as drives for conveyor troughs, sieves and discharge devices.

The stainless steel surfaces of the vibrators are especially resistant to chemically corrosive environmental conditions and can be thoroughly cleaned manually and by machine with powerful cleaning agents.

Construction and Working Principle

Stainless steel electric external vibrators are three-phase current asynchronous motors with adjustable unbalances at both ends of the shaft. These unbalances generate an undirected sinusoidal vibration with the frequency of the corresponding rotation speed.

The extremely load-resistant roller bearings guarantee a long working life. All NES are suitable for operation with Netter frequency and voltage converters.

NetterVibration has a worldwide network of experienced application engineers and field representatives. We would be pleased to offer advice on site and to help optimise your applications using vibration technology.

NetterVibration offers the accessories required for the mounting, installation, control and monitoring of vibrators and impactors.

Netter provides solutions. Consult our experienced application technicians.

Netter GmbH

Germany
Fritz-Ullmann-Str. 9
55252 Mainz-Kastel
Tel. +49 6134 2901-0
Fax +49 6134 2901-33

Switzerland
Erlenweg 4
4310 Rheinfelden
Tel. +41 61 8316200
Fax +41 61 8311291

Poland
Al. W. Korfantego 195/17
40-153 Katowice
Tel. +48 32 2050947
Fax +48 32 2051572

www.**NetterVibration.com**
info@**NetterVibration.com**

06/2012 Subject to change without notice